

Join the 200+ special
education law professionals
who gather annually to
brush up on today's
most relevant issues!

Exceptional Children Conference



Lancaster

Monday, October 27, 2014

Lancaster Marriott at Penn Square
25 S. Queen Street

PENNSYLVANIA BAR INSTITUTE

Continuing Education Arm of the Pennsylvania Bar Association

BRINGING EXCELLENCE TO CLE

Exceptional Children Conference



Attend the premier education event for child attorneys, school district attorneys, hearing officers and advocates

Connect, learn, exchange, and share the passion with other special education professionals and create exceptional education opportunities for exceptional children!

Gain a balanced perspective on all issues

Most of the sessions are team-taught by a balanced panel of school district and child/family attorneys. Gain the competitive advantage by hearing how a case is handled from both sides of the “v”!

More than a dozen workshops, exposure to leading counsel, and phenomenal networking!

Today’s most critical issues are explored by attorneys and professionals who practice in this area every day. Bring your questions! And your business cards—there is no better way to meet and connect with others who practice in this area, too!

Are you a parent of a child with exceptionalities?

The ECC offers you first rate instruction for advocating for your child, contact with some of the state’s most experienced legal practitioners, and exceptional opportunities to meet and compare notes with other parents.

Planned and Developed by the PA Bar Association Legal Services for Exceptional Children Committee



Who better to hone in on the most important and emerging issues affecting today’s special education law practitioner? Join the Committee members as they launch their 2014 conference, designed to highlight the most relevant legislation, regulations, and programs affecting exceptional children and their families.

The book is your “24/7” guide to the practice area, and now it’s available on CD-ROM!

- clear explanations of policies and services
- glossaries
- contacts
- sample forms
- the perfect “how to” for any level of experience



Faculty

Craig David Becker, Esq.

Philadelphia

Amy T. Brooks, Esq.

Wisler Pearlstine LLP, Blue Bell

Katherine E. Burdick, Esq.

Juvenile Law Center, Philadelphia

Anne L. Carroll, Esq.

Special Education Due Process Hearing Officer, Office for Dispute Resolution, Reading

Michael J. Connolly, Esq.

Connolly, Jacobson & John, LLP, Doylestown

Daniel B. Cooper, Esq.

Law Office of Kenneth S. Cooper, Bala Cynwyd

William F. Culleton, Jr., Esq.

Special Education Due Process Hearing Officer, Office for Dispute Resolution Philadelphia

Leigh E. Dalton, Esq.

Stock and Leader, York

Deborah G. DeLauro, Esq.

Law Office of Deborah G DeLauro, Haverford

Andrew E. Faust, Esq.

Sweet, Stevens, Katz & Williams, LLP New Britain

Tammy J. Flail, Esq.

Levin Legal Group, P.C., Huntingdon Valley

Brian Jason Ford, Esq.

Special Education Due Process Hearing Officer, Office for Dispute Resolution Allentown

Erin D. Gilsbach, Esq.

Director of Professional Education and Policy Development King Spry Herman Freund & Faul LLC Bethlehem

Timothy E. Gilsbach, Esq.

King Spry Herman Freund & Faul LLC Bethlehem

Amy S. Goldman, M.S.

Co-Executive Director, Institute on Disabilities, Temple University, Philadelphia

Joshua M. Kershenbaum, Esq.

Frankel & Kershenbaum, LLC West Conshohocken

Heidi B. Konkler-Goldsmith, Esq.

Supervising Partner of Special Education McAndrews Law Offices, P.C., Berwyn

Dennis C. McAndrews, Esq.

McAndrews Law Offices, P.C., Berwyn

Maura McInerney, Esq.

Senior Staff Attorney, Education Law Center-PA, Philadelphia

Rhonda L. McKitten, Esq.

Defender Association of Philadelphia Philadelphia

Elizabeth S. Morgan, Esq.

Liz Morgan Law, LLC, Wallingford

Caryl Andrea Oberman, Esq.

Law Offices of Caryl Andrea Oberman LLC Willow Grove

Catherine Merino Reisman, Esq.

Freeman Carolla Reisman & Gran LLC Haddonfield, NJ

Course Planners



Grace M. Deon, Esq.

Eastburn and Gray, P.C. Doylestown

Ms. Deon is a shareholder with Eastburn and Gray, P.C., and practices in the areas of Special Education, Employment, and Commercial Litigation. Much of her work consists of trying cases on behalf

of school districts and employers before state and federal courts and administrative agencies. She also has represented school districts in numerous special education due process hearings. She is Chair of the PBA Legal Services for Exceptional Children Committee. She also serves on the Bucks County Bar Association Board of Directors



Stephen J.

Jacobson, Esq., Psy.D.

Connolly, Jacobson & John, LLP, Doylestown

Dr. Jacobson is a founding member and current Managing Partner of Connolly, Jacobson & John, LLP in Doylestown. Dr. Jacobson earned his doctorate in Clinical

Psychology cum laude from Widener University, and concurrently earned a law degree *cum laude* from the Widener University School of Law. Dr. Jacobson has presented extensively on both special and general education topics across Pennsylvania to educators, parents, attorneys and hearing officers. He is Vice Chair of the PBA Legal Services for Exceptional Children Committee.

A first-class faculty of experienced attorneys and professionals

Brooke E. D. Say, Esq.

Stock & Leader, York

Cathy A. Skidmore, M.Ed., J.D.

Special Education Due Process Hearing Officer, Office for Dispute Resolution Pittsburgh

Nicole D. Snyder, Esq.

Latsha Davis & McKenna, P.C., Exton

Kyle Somers, Esq.

Dischell, Bartle & Dooley, P.C., Lansdale

Linda M. Valentini, Psy.D, CHO

Special Education Due Process Senior Hearing Officer, Office for Dispute Resolution Philadelphia

Thomas C. Warner, Esq.

Sweet, Stevens, Katz & Williams LLP New Britain

Liliana Yazno-Bartle, Esq.

Law Offices of Caryl Andrea Oberman, LLC Willow Grove

PROGRAM

MONDAY, OCTOBER 27, 2014

8:50 – 9:00 Welcome & Introduction

9:00 – 9:30 **Hearing Officer Updates: Electronic Exhibits, Virtual Hearing Pilot, Current Topics of Interest**

Brian Jason Ford, Cathy A. Skidmore

9:40 – 10:40

1. Introduction to Special Education Law

Daniel B. Cooper
Tammy J. Flail
Cathy A. Skidmore

2. The Truant Disabled Student: Are Districts Dropping the “Truancy” Ball or Are Parents Enabling the Truant Behavior? (repeated in 9)

Leigh E. Dalton
Deborah G. DeLauro
Brooke E. D. Say

3. Discipline and Behavioral Intervention

Michael J. Connolly
William F. Culleton, Jr.
Thomas C. Warner

4. Accommodating Kids with Disabilities in College and through Transitioning

(repeated in 11)

Dennis C. McAndrews

10:50 – 11:50

5. Disagreements in Special Education: What Next?

Cathy A. Skidmore
Linda M. Valentini
Grace M. Deon (M)
Stephen J. Jacobson (M)

6. Charter Schools, Cyber Charter Schools and the Evolving Impact of School Choice in Special Education (repeated in 14)

Catherine Merino Reisman
Nicole D. Snyder

7. Top 10 Tips for Legally-Defensible Progress Monitoring

Erin D. Gilsbach
Liliana Yazno-Bartle

8. Ethical Issues for Attorneys in the IEP Meeting Process (repeated in 15)

Amy T. Brooks
Anne L. Carroll
Joshua M. Kershenbaum

ETHICS

11:50 – 12:35 Lunch

12:35 – 2:05 **Year in Review** — Andrew E. Faust and Caryl A. Oberman

2:20 – 3:20

9. The Truant Disabled Student: Are Districts Dropping the “Truancy” Ball or Are Parents Enabling the Truant Behavior? (repeat of 2)

Leigh E. Dalton
Deborah G. DeLauro
Brooke E. D. Say

10. Preschool Early Intervention in Pennsylvania

Timothy E. Gilsbach
Heidi B. Konkler-Goldsmith

11. Accommodating Kids with Disabilities in College and through Transitioning (repeat of 4)

Dennis C. McAndrews

12. Specific Learning Disability: Making (and Disputing) Eligibility Determinations under SLD

Craig David Becker
Brian Jason Ford
Kyle Somers

3:30 – 4:30

13. Promoting Better Outcomes when the Special Education and the Juvenile Justice Systems Collide

Katherine E. Burdick
Maura McInerney
Rhonda L. McKitten

14. Charter Schools, Cyber Charter Schools and the Evolving Impact of School Choice in Special Education (repeat of 6)

Catherine Merino Reisman
Nicole D. Snyder

15. Ethical Issues for Attorneys in the IEP Meeting Process (repeat of 8)

Amy T. Brooks
Anne L. Carroll
Joshua M. Kershenbaum

ETHICS

16. Assistive Technology

Amy S. Goldman
Elizabeth S. Morgan

KEY

- Basic
- Intermediate/Advanced
- Intermediate
- (M) Moderator



SESSION DESCRIPTIONS

9:40 am – 10:40 am

1. Introduction to Special Education Law

Daniel B. Cooper, Tammy J. Flail, Cathy A. Skidmore

Have you ever wanted to know the answers to basic questions regarding special education law, but never asked? Well, this is your chance to ask. Come and join what promises to be a lively and informative discussion on the basics of special education law including, on issues concerning Child Find, Evaluations, Eligibility for Special Education, the IEP process, FAPE, Compensatory Education, and what options a parent has to resolve disagreements.

2. The Truant Disabled Student: Are Districts Dropping the “Truancy” Ball or Are Parents Enabling the Truant Behavior?

*Leigh E. Dalton, Deborah G. DeLauro
Brooke E. D. Say*

The complicated issues associated with truancy reflect the confluence of special education and compulsory attendance laws in Pennsylvania. This session will briefly review the truancy laws in Pennsylvania and how they conflict with special education mandates. Participants will discuss hypothetical situations, determine where “things went wrong” and identify what could have been done to reengage the child in school. (repeated in 9)

3. Discipline and Behavioral Intervention

*Michael J. Connolly, William F. Culleton, Jr.
Thomas C. Warner*

The discipline of exceptional students is one of the most challenging areas of special education law for administrators, teachers, parents and legal practitioners. This seminar will explore the practical and procedural considerations that everyone must consider when faced with disciplining exceptional children

4. Accommodating Kids with Disabilities in College and through Transitioning

Dennis C. McAndrews

Colleges and universities are increasingly confronted with requests for accommodations and modifications with regard to testing, assignments, and even curriculum with regard to students with disabilities. These students often enter college from secondary schools which provide not only accommodations, but also individualized specially designed instruction to address the student’s disability. This session will address the specific legal requirements of post-secondary schools in addressing the needs of students with disabilities. (repeated in 11)

10:50 pm – 11:50 pm

5. Disagreements in Special Education: What Next?

*Cathy A. Skidmore, Linda M. Valentini
Grace M. Deon & Stephen J. Jacobson, Moderators*

A special session especially for parents and those unfamiliar with dispute resolution in special education. In a moderated forum where participation is encouraged, Hearing Officers Valentini and Skidmore will focus on an overview of the options for resolving disagreements between parents and local education agencies, and answer your general questions about due process in Pennsylvania.

6. Charter Schools, Cyber Charter Schools and the Evolving Impact of School Choice in Special Education

Catherine Merino Reisman, Nicole D. Snyder

This engaging workshop will explore the legal and practical aspects of special education in charter schools and cyber charter schools and their broader impact on the evolution of educational opportunities for students with an emphasis on issues unique to these schools related to: parent and school communication and collaboration, the location and delivery of services, settlement agreements, and school funding. (repeated in 14)

7. Top 10 Tips for Legally-Defensible Progress Monitoring

Erin D. Gilsbach, Liliana Yazno-Bartle

Effective progress monitoring is essential to any special education program. However, good progress monitoring is hard to find. What should it look like? How often should it be done? Is there a correct format? The courts and hearing officers have established expectations as to what are and are not acceptable progress monitoring practices. In this session, the presenters will analyze progress monitoring issues in recent cases and break them down into ten best practice tips for schools and parents.

8. Ethical Issues for Attorneys in the IEP Meeting Process

*Amy T. Brooks, Anne L. Carroll
Joshua M. Kershenbaum*

In a participatory format, the session will focus on ethical challenges that arise in the course of representing your client through the IEP meeting process. Who do you send to the meeting? Who is your client at the meeting? What is confidential between you and your client and what is not? What does zealous representation during the IEP meeting look like? What other ethical issues have you encountered at IEP meetings that others should know? Come learn from each other and share your experiences. (repeated in 15)

2:20 pm – 3:20 pm

9. The Truant Disabled Student: Are Districts Dropping the “Truancy” Ball or Are Parents Enabling the Truant Behavior?

*Leigh E. Dalton, Deborah G. DeLauro
Brooke E. D. Say*

See session #2.

10. Preschool Early Intervention in Pennsylvania

Timothy E. Gilsbach, Heidi B. Konkler Goldsmith

This course will walk you through the preschool early intervention process in Pennsylvania, including the evaluation process, development of the IEP and placement issues. Particular emphasis will be placed on the differences between preschool early intervention and school age programming. In addition, there will be a discussion of the transition process from preschool intervention to school age programming.

11. Accommodating Kids with Disabilities in College and through Transitioning

Dennis C. McAndrews

See session #4.

12. Specific Learning Disability: Making (and Disputing) Eligibility Determinations under SLD

Craig David Becker, Brian Jason Ford, Kyle Somers

This session will examine the IDEA’s definition of ‘specific learning disability’ and will focus on the process through which eligibility for special education is determined. Special attention will be paid to commonly contested issues that arise when evaluating and making eligibility decisions for SLD.

Session descriptions continued on page 6

Mark Your Calendar

MARCH 10 • PHILADELPHIA | MARCH 17 • MECHANICSBURG
MARCH 24 • PITTSBURGH

The Due Process Hearing

What to expect in a special education due process hearing—and how to effectively prepare for one!

Through discussion facilitated by a panel of experienced practitioners, you will work through the stages of a due process hearing, leaving you feeling confident and ready to prepare your own case diligently and thoroughly.

SESSION DESCRIPTIONS CONTINUED

3:30 pm– 4:30 pm

13. Promoting Better Outcomes when the Special Education and the Juvenile Justice Systems Collide

*Katherine E. Burdick, Maura McInerney
Rhonda L. McKitten*

This workshop will explore the ways in which the special education and juvenile justice systems interact so practitioners can maximize all educational opportunities for youth who face charges or have been adjudicated delinquent. Topics covered will include: common special education issues for system-involved youth, who is the "parent," LEA responsibilities, and tips for successful re-entry. We will also discuss how special education attorneys can collaborate with juvenile defenders and utilize the court to improve outcomes.

14. Charter Schools, Cyber Charter Schools and the Evolving Impact of School Choice in Special Education

Catherine Merino Reisman, Nicole D. Snyder

See session #6.

15. Ethical Issues for Attorneys in the IEP Meeting Process

*Amy T. Brooks, Anne L. Carroll
Joshua M. Kershenbaum*

See session #8.

16. Assistive Technology

Amy S. Goldman, Elizabeth S. Morgan

This workshop will give a "nuts and bolts" overview of Assistive Technology as related to the right to a free and appropriate public education, including relevant law and policy. Discussion will be geared toward practical considerations and resources for addressing AT issues through the IEP process, approaches to "consideration" of AT, and real-world obstacles that may interfere with the ability to effectively meet AT needs. The role of AT during the transition process will also be addressed.

6 CLE Credits Including Ethics

This Institute has been approved by the Pennsylvania Continuing Legal Education Board for 5 hours of CLE credit in substantive law and 1 hour in ethics. Workshop choices will determine whether credits are in substantive law, practice and procedure or ethics, professionalism or substance abuse.

Featured Panels



Linda M. Valentini, Psy.D, CHO



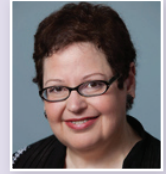
Cathy A. Skidmore, M.Ed., J.D

Disagreements in Special Education: What Next?

Join Special Education Due Process Hearing Officers Dr. Linda Valentini and Cathy Skidmore as they answer your questions. Designed to help parents and those new to dispute resolution in special education navigate the system, course planners Grace Deon and Steve Jacobson moderate a lively discussion between the hearing officers and you!



Andrew E. Faust, Esq.



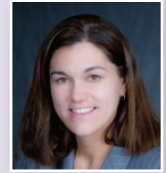
Caryl Andrea Oberman, Esq.

Year in Review

The phrase "magical chemistry" has been used to describe these two together—join dynamic duo Andy Faust and Caryl Oberman as they recap the year in legislative and case law developments. It's a "he said, she said" on the year's top picks—and an unforgettable verbal sparring between two very sharp and analytical minds!



Joshua M. Kershenbaum, Esq.



Amy T. Brooks, Esq.

Did you know that your ethics requirement for 2015 just went up?

Stock up on ethics credit with Josh Kershenbaum and Amy Brooks as they explore critical decision-making dos and don'ts when it comes to IEP meetings.



A block of rooms has been reserved at the Marriott Lancaster at Penn Square for Sunday, October 26. To make your reservation, contact the hotel at (888) 850-6146. Mention this conference to take advantage of our special rate of \$149 (includes parking). Room block expires October 6.



hotel accommodations

Exceptional Children Conference

Lancaster

Monday, October 27, 2014

Lancaster Marriott
at Penn Square
25 S. Queen Street

8:50 am to 4:30 pm; check-in begins at 8:15 am

8300F

Tuition (INCLUDES COURSE BOOK AND LUNCH)

EARLY*	STANDARD
<input type="checkbox"/> \$279 Members — Pa., or any co. bar assn.	<input type="checkbox"/> \$304
<input type="checkbox"/> \$259 Members admitted after 1/1/10	<input type="checkbox"/> \$284
<input type="checkbox"/> \$299 Nonmembers	<input type="checkbox"/> \$324
<input type="checkbox"/> \$99 Paralegals attending with an atty.	<input type="checkbox"/> \$124
<input type="checkbox"/> \$140 Judges and judicial law clerks	<input type="checkbox"/> \$165
<input type="checkbox"/> \$130 Judges and judicial law clerks admitted after 1/1/10	<input type="checkbox"/> \$155
<input type="checkbox"/> \$249 School District Administrator	<input type="checkbox"/> \$274
<input type="checkbox"/> \$199 Nonattorney parent	<input type="checkbox"/> \$224

*Registrations received 3 or more business days before the presentation qualify for the Early Registration Discount. Add \$25 for registrations received 3 or fewer business days before the presentation.

CD-ROM or Book Available

One copy of the conference materials is included in your registration. Please specify whether you wish to have the CD-ROM or printed version. You cannot change your selection on-site; however, you can purchase either the CD-ROM or printed versions for just an additional \$50. If no preference is specified, you will receive the CD-ROM.

- I would like the **printed version** (2014-8300) of the conference materials.
- I would like the **CD-ROM version** (CR-8300) of the conference materials.
- I am registering for the conference and would like **both the CD-ROM and the printed book** (CRS-8300) for an additional \$50.

I cannot attend, but would like to purchase the **printed version** (2014-8300): \$69 Include \$8.00 shipping & handling & \$4.62 sales tax for a total of \$81.62

I cannot attend, but would like to purchase the **CD-ROM version** (CR-8300): \$69 Include \$8.00 shipping & handling & \$4.62 sales tax for a total of \$81.62

I cannot attend, but would like to purchase **both the CD-ROM and the printed book** (CRS-8300): \$119 Include \$8.00 shipping & handling & \$7.62 sales tax for a total of \$134.62

If you are ordering course materials separately, please allow two weeks after the program for the shipment of books and 4 to 6 weeks for shipment of the CDs and book/CD sets.

Name _____ Atty. # _____

Firm _____

Address _____

City _____ State _____ Zip _____

Email (required for confirmation) _____

Phone _____/_____-_____ FAX _____/_____-_____

I have enclosed my discount coupon in the amount of \$ _____ for my 1st 2nd 3rd 4th 5th seminar.

A check made payable to PBI for \$ _____ is enclosed.

Charge my:    

Card # _____ Exp. Date _____

Signature _____



PBI, 5080 Ritter Rd.
Mechanicsburg, Pa.
17055-6903



(717) 796-2348



(717) 796-0804
(800) 247-4724
(800) 932-4637

Registration Policy: We encourage early registration. Save \$25 on registrations received 3 or more business days before the presentation date. Early registration helps us ensure there will be sufficient course materials, seating and refreshment. Walk-in registrations will be accepted on a space-available basis. Pre-registered customers receive priority on the distribution of course materials. Those intending to register at the door should check www.pbi.org or call (800) 247-4724 to ensure that the course has not sold out and that there have been no schedule changes.

Cancellation Policy:

In order to receive a refund for cancellation (less a \$25 administrative fee), you must notify PBI by mail or FAX no later than 2 business days prior to the course presentation date for the appropriate site. Otherwise, you will receive the course materials in full consideration of tuition paid.

Weather Related Cancellations:

Check www.pbi.org or call (800)-932-4637 ext. 2205.

Registration Transfers: Requests for transfers will be honored if they are received prior to the date of the course.

Services for Persons with Disabilities:

If special arrangements are required, please contact Customer Service at (800) 932-4637 at least ten days prior to the presentation date.

Registration Confirmation:

Be sure to include your email address on the registration form to receive a confirmation. Expedite your check-in by bringing this confirmation to the seminar, but is not required for admission.

Speaker Substitutions: PBI reserves the right to substitute speakers at all programs.

PBI Scholarships: PBI offers substantially reduced tuition for most PBI seminars to allow attorneys experiencing financial hardship to fulfill their mandatory education requirement. For details and an application, contact Scholarship Administrator at scholarships@pbi.org or (800) 932-4637 Ext. 2284 at least 30 days before the program. (Please note scholarships are not available for Online CLE.)

shs/sat-8/29/2014

www.pbi.org

Exceptional Children Conference

Lancaster

Monday, October 27, 2014



REGISTER NOW



- ▶ 8:50 am to 4:30 pm; lunch is provided
 - ▶ 6 hours of CLE credit including ethics
- These PBI CLE credits count in New Jersey, New York, Delaware, Ohio, and more!**

If you need CLE credits in another state, sign in at check-in, or go to pbi.org for more information under Customer Service/Policies.

— CONNECT WITH PBI —



PENNSYLVANIA BAR INSTITUTE
Continuing Education Arm of the Pennsylvania Bar Association
BRINGING EXCELLENCE TO CLE

5080 Ritter Road, Mechanicsburg, Pennsylvania 17055-6903



PBI is pleased to cosponsor
this program with the PBA
Legal Services for Exceptional
Children Committee.

NONPROFIT ORG.
U.S. POSTAGE
PAID
Pennsylvania Bar
Institute